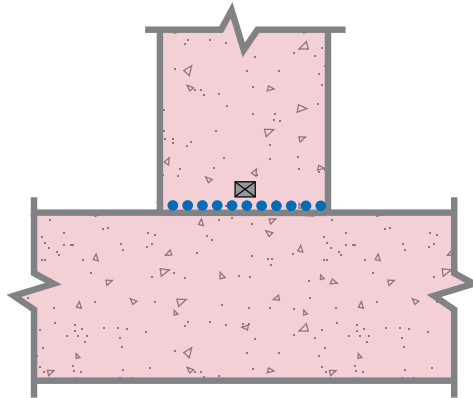
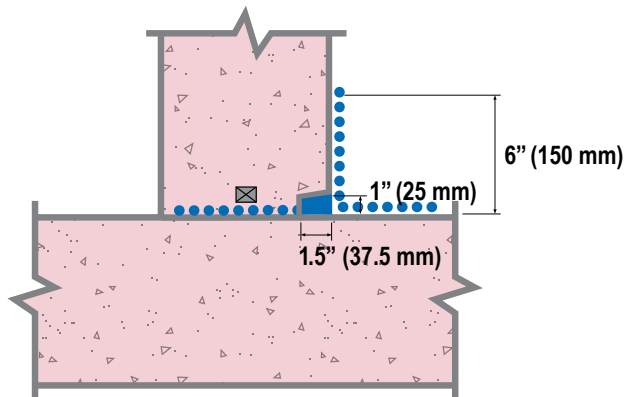


STANDARD CONSTRUCTION JOINT DETAILS – WALL ONTO SLAB

Not subject to hydrostatic pressure



Subject to hydrostatic pressure



..... CONCENTRATE SLURRY COAT
 ■ CONCENTRATE DRY-PAC
 ■ ADMIX
 WATERSTOP

STEP 1: Clean joint thoroughly. Between pours apply Xypex Concentrate slurry to joint surface at the rate of 2.0 lb./sq.yd. (1.0 kg/m²).

STEP 2: On the side of the concrete element that will have direct water contact modify the formwork to create a linear groove in the finished concrete surface. The linear groove is to be aligned with the wall to slab joint. The linear groove is to be 1" (25 mm) high by 1½" (37 mm) deep.

STEP 3: Pour Xypex Admix treated concrete and cure in accordance with ACI, EN or other accepted quality concreting authority. Strip forms including formwork for linear groove.

STEP 4: Clean linear groove thoroughly. Apply Xypex Concentrate slurry to linear groove at the rate of 1.5 lb./sq.yd. (0.8 kg/m²). Fill linear groove with Xypex Concentrate Dry-Pac and pack tightly to create the Xypex "sealing strip".

STEP 5: Apply Xypex Concentrate slurry coat at 1.5 lb./sq.yd. (0.8 kg/m²) over sealing strip and extending to 6" (150 mm) on either side. Cure for 48 - 72 hours in accordance with normal Xypex coatings curing procedures.

Note 1: Schematic diagram shows Xypex application and waterstops. Inclusion, type and position of waterstops are at the discretion of the designer. Expanding waterstops may be placed on Xypex after it has dried or before Xypex slurry application. Xypex slurry may only be applied over waterstop if approved by waterstop manufacturer.

Note 2: Keyways may be incorporated into the joint design at the discretion of the designer.

Note 3: Schematic drawing shows Xypex Admix application. Specifier may consider the alternative use of Xypex dry shake (DS-Series) or Xypex coatings, where applicable. Refer to Xypex Standard Specifications for more information.