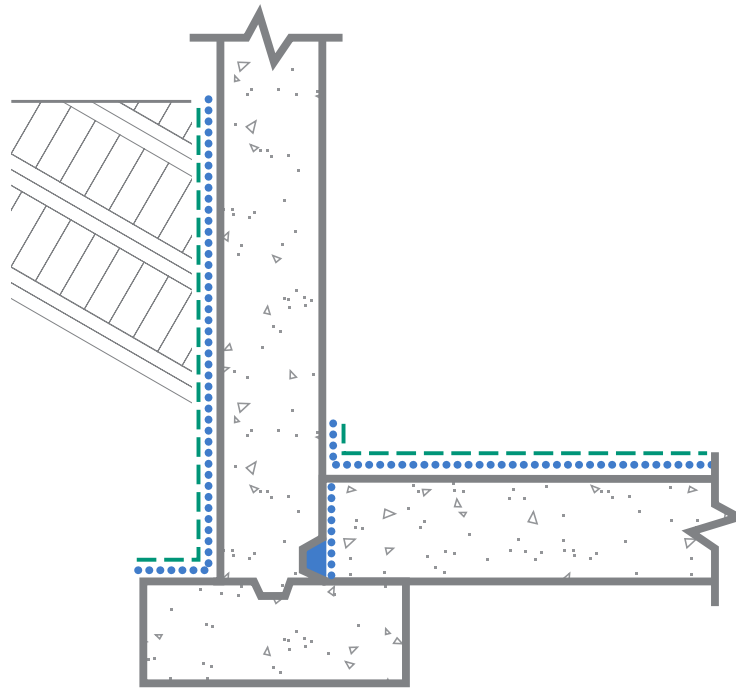


CONCRETE WALL & SLAB – OUTSIDE APPLICATION – SLAB INTO WALL



..... CONCENTRATE SLURRY COAT
 ■ CONCENTRATE DRY-PAC
 - - - MODIFIED SLURRY COAT

STEP 1: Where the slab will contact the wall modify the wall forms to create a linear groove in the finished concrete surface. The linear groove is to be aligned with the bottom of the slab and is to be 1½" (37 mm) high by 1" (25 mm) deep.

STEP 2: Pour concrete and cure in accordance with ACI, EN or other applicable international standard. Strip forms including formwork for linear groove.

STEP 3: Clean joint including linear groove thoroughly. Apply Xypex Concentrate slurry to the linear groove at the rate of 1.5 lb./sq.yd. (0.8 kg/m²). Fill linear groove with Xypex Concentrate Dry-Pac and pack tightly to create the Xypex "sealing strip".

STEP 4: Apply Xypex Concentrate slurry at 2.0 lb./sq.yd. (1.0 kg/m²) over sealing strip and extending to the full area of contact with the slab.

STEP 5: Pour slab as per Step 2.

STEP 6: Thoroughly profile, clean and saturate the outside surface of all walls and the top surface of slabs that will receive Xypex coatings. Surfaces shall have a "tooth and suction" ICRI CSP-3 profile and be fully saturated with no glistening water on the surface.

STEP 7: Apply one coat of Xypex Concentrate at the rate of 1.25 - 1.5 lb./sq.yd. (0.65 - 0.8 kg/m²). If a second coat is required after the Concentrate has set but while it is still

"green", apply either another coat of Xypex Concentrate or a coat of Xypex Modified at the rate of 1.25 - 1.5 lb./sq.yd. (0.65 - 0.8 kg/m²).

STEP 8: Cure by keeping coating moist by misting or fog spraying periodically with water for 2 - 3 days. Backfill and place into service as per Xypex coatings guidelines.

Note 1: A single heavy coat may be used in some situations. Contact Xypex Technical Services Representative for assistance.

Note 2: Details are shown for joints that incorporate a keyway. Non-keyway joint assemblies are illustrated in the Admix Schematic Drawings.

Note 3: Schematic diagram shows Xypex application details only and does not depict standard requirements for waterstops or expansion joints. Inclusion, type and position of waterstops are at the discretion of the designer. Expanding waterstops may be placed on the slurry coat after it has dried or before application. Slurry coat may only be applied over waterstop if approved by waterstop manufacturer.

Note 4: Schematic drawing shows Xypex coating application. Specifier may consider the alternative use of Xypex dry shake (DS-Series) or Xypex additive (Admix C-Series). Refer to Xypex Standard Specifications for more information.